



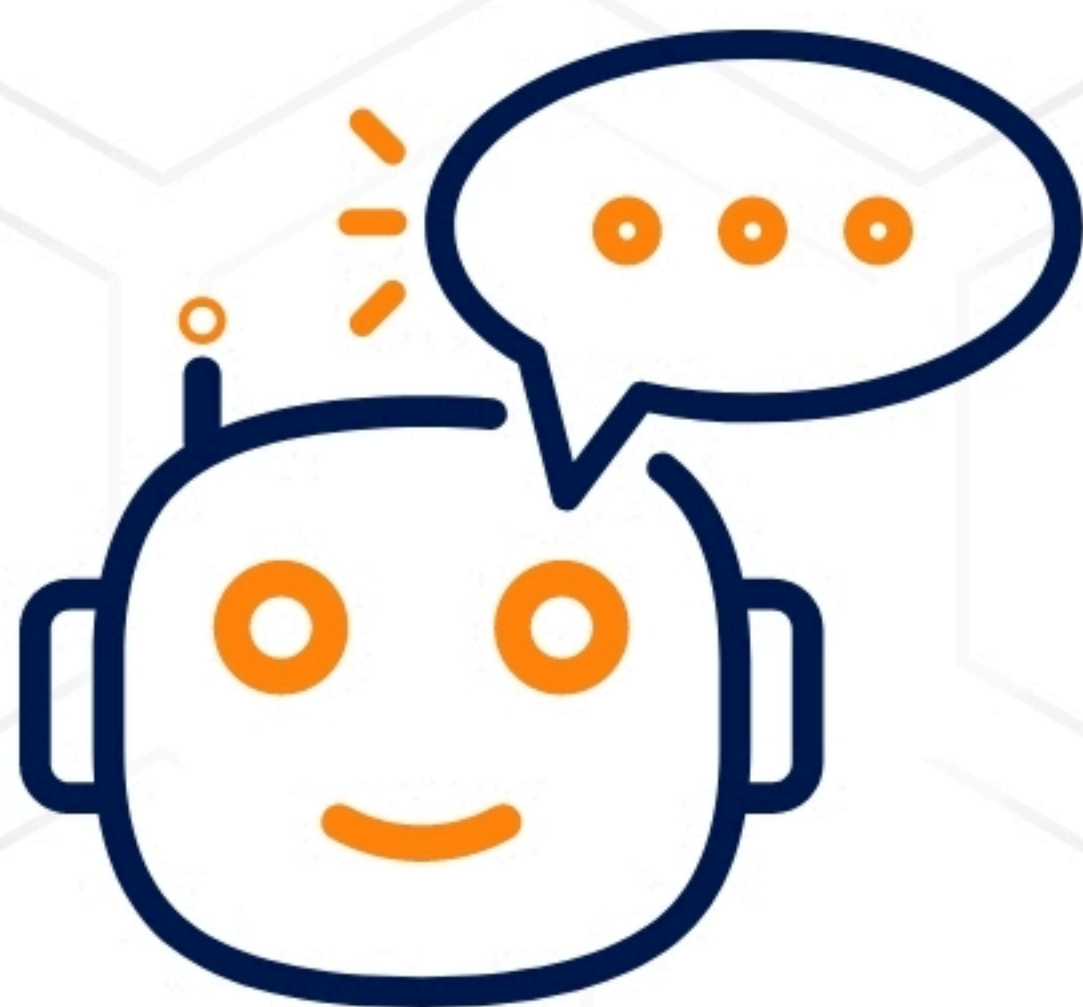
DEEPWATCH™

Key Capabilities of Deepwatch Continuous Threat Exposure Management (CTEM)



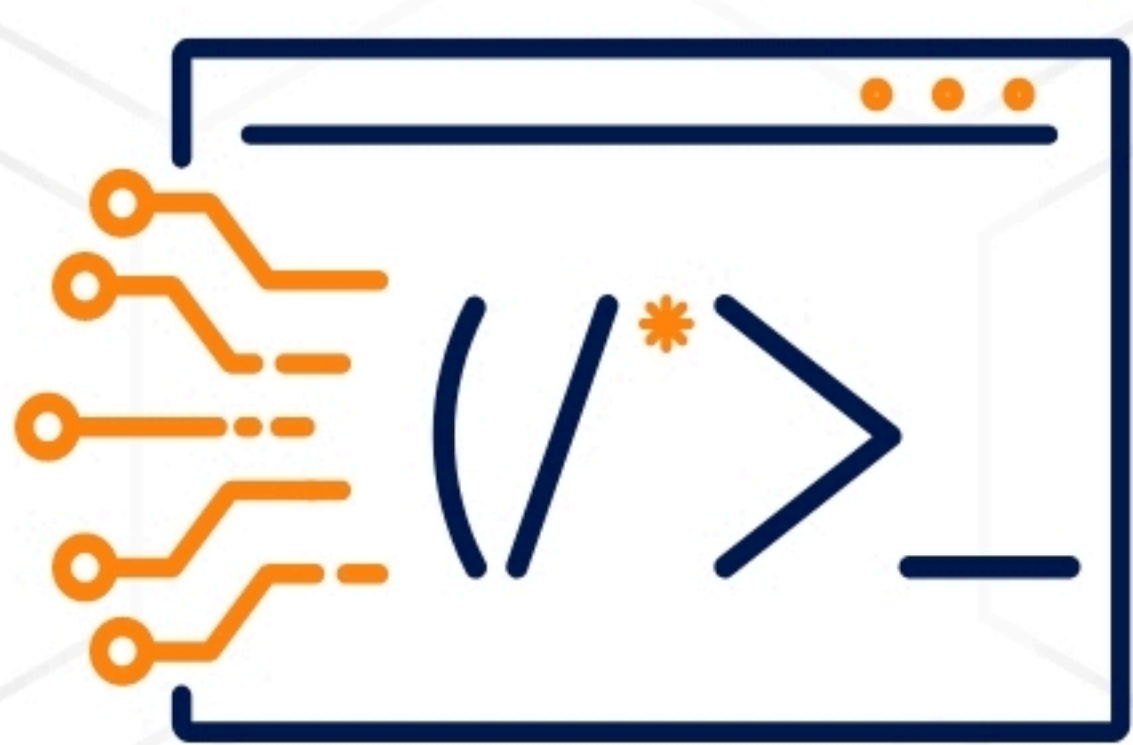
Business Insights

Deepwatch CTEM translates technical cyber data into clear, business-focused insights and reports that executives and boards can act on.



Agentic AI

The agentic AI interface lets security leaders generate tailored business impact reports on demand without relying on manual analyst effort.



Real-time Signal Aggregation

Collects and normalizes signals and telemetry from EDR/XDR, cloud, identity, and network sources.



Context-driven Triage

Automatically enriches incidents, with internal and external threat intel, asset data, and vulnerability status.



Dynamic Automation

No-code workflows automate investigations, approvals, and responses (e.g., user disablement, network quarantine).



Expert-validated Outcomes

Every critical workflow can include approval and oversight steps by Deepwatch or in-house analysts, maximizing security and auditability.

For more details visit:

www.deepwatch.com/continuous-threat-exposure-management